

2022 ANNUAL REPORT

A Letter from our CEO & Board Chair

Imagine the mental health system as this large, loosely connected net. We are all part of this net, from providers to insurers to hospitals, schools, communities, and you, our donors.

If we hope to tackle the youth mental health crisis in this country and give every child and family the help they need, this net must be incredibly strong and well-connected, and it is not.

The holes are too big, and youth and families are getting stuck in the wrong place, unable to move from one spot to another, or falling through completely.

To make progress and create a strong and well-connected net in our mental health system, **we must work together, be bold, challenge the status quo, and bring innovative solutions to the table.**

Nexus Family Healing is leading the charge, with creativity, new partnerships, and support from you.

This past year, we served over 4,300 youth, families, and adults. Thanks to our community partners and supporters like you, Nexus was able to:

- Open Aspen House, a shelter for teens who temporarily need a safe place to stay, mental health support, and other resources.
- Help more kids in schools with in-school therapy, case management, and family support to reduce barriers to service and increase school success.
- Provide immediate, culturally sensitive, in-person support for families with children experiencing mental health crises through our Family Response and Stabilization Services, which now has extended hours due to demand.



Dr. Michelle K. Murray
President/CEO
Nexus Family Healing

Jeri Quest
Board Chair

- Support and provide more teens aging out of foster care with the tools they need to successfully transition into independent adults.
- Affirm that everyone deserves access to mental health services by finding ways to remove financial, transportation, and other barriers that can keep families from getting the care they need.

Nexus will continue to identify needs, fill gaps, and innovate while maintaining the critical services we provide today.

This next year, children and teens with higher level mental and behavioral health needs will have a new place to turn with the opening of our new psychiatric residential treatment facility. Youth and families hoping for a successful transition home or to another care setting, from psychiatric residential facilities and inpatient psychiatric hospitals will be able to utilize our new Youth Care Transition program.

Every one of these programs fills a gap and makes that net stronger. **Thank you for your support in this life-saving work and for being part of our Nexus family.**



Our Mission

Changing the course of a child's life by stabilizing families and strengthening mental health.

Our Services

Outpatient/Community Mental Health Services

We meet youth and families in our communities when and where they need us most with specialty programs in home, in schools, through outpatient therapy and with immediate crisis support programs.

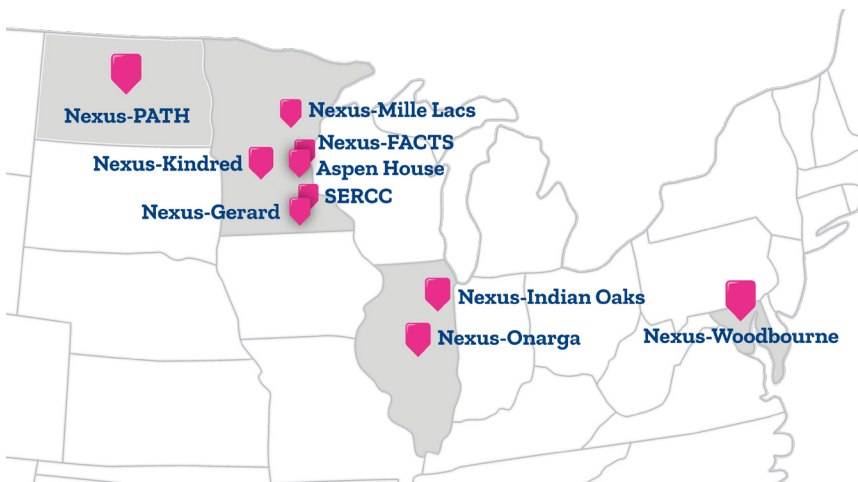
Foster Care & Adoption

When children enter foster care due to an unsafe and/or unstable home environment, we provide foster homes to care for these kids while their families get back on their feet. We work hard to reunite children with their families. When that isn't possible, we do everything we can to ensure youth can have a loving, stable home.

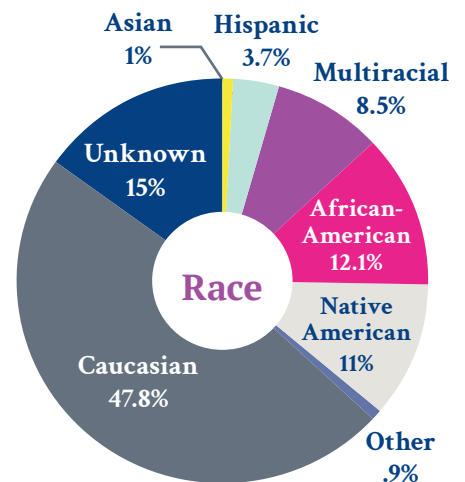
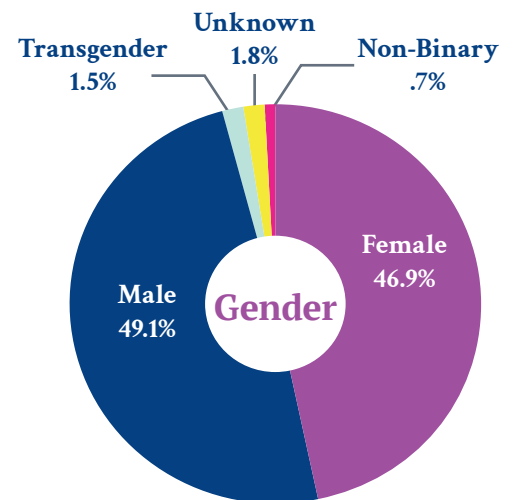
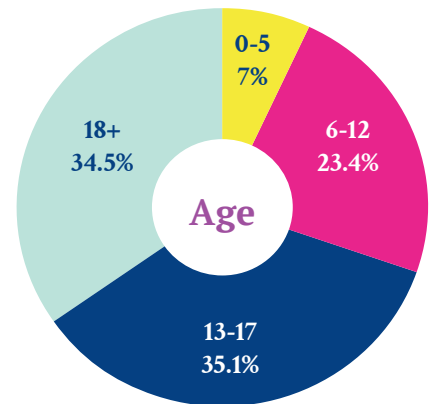
Residential Treatment

For kids who need intensive support and care, we provide short- and long-term treatment programs at our residential facilities. Our family-centered, trauma-informed approach creates a caring place for youth to recover and grow.

Where We Serve



Who We Serve





Meeting the Challenge with Innovation

Sam* was small for his 12 years, with a slight build and a shock of dark hair that frequently covered his right eye.

He had been living at Nexus-Mille Lacs Family Healing for over a year, spending all of his holidays and special events with the staff there because family visits weren't safe for him at the time. The staff at Nexus-Mille Lacs rallied around Sam, doing everything they could to make those days special for him. But they knew it was hard for him.

Sam could have been really angry. Instead, he worked hard with his therapist though, at times, she wondered how effective she was because Sam would often play with cars during therapy; he didn't talk much and often didn't appear to be listening. But the two continued to work together for many months.

One day, they met to talk through how thoughts and feelings influence behavior. Sam surprised her by looking her in the eye and saying, "Hey, I've got this!" Sam then took a marker, walked to the dry erase board at the other side of the office and slowly and methodically began to draw the "ABC Triangle" on the whiteboard. The triangle was a tool he learned from his therapist over the past several months.

It turned out that playing cars during therapy helped Sam focus and concentrate. Like many children, he was always listening. Sam just needed an adult who believed in him, helped him feel safe, and could give him the tools to connect and move forward in his own way.

**Names, images and other details have been changed to maintain privacy.*

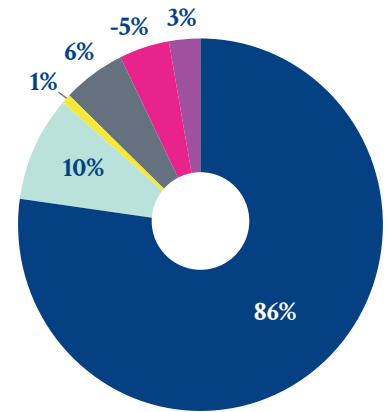
Financials

	2022	2021
CURRENT ASSETS		
Cash and cash equivalents	13,309,124	10,009,584
Operating investments	37,412,885	41,717,013
Accounts Receivable	13,282,409	11,722,581
Prepaid Expenses and the current assets	621,790	517,856
Total current assets	64,626,208	63,967,034
NONCURRENT ASSETS		
Property and equipment, net	33,640,774	34,774,705
Related party receivables	352,840	2,621,529
Investment - other long term	816,054	501,083
Operating right of use asset	3,991,348	
Other assets	2,119	3,719
Goodwill	806,316	806,316
Total noncurrent assets	39,609,451	38,707,352
Total assets	\$104,235,659	\$102,674,386
CURRENT LIABILITIES		
Current portion - bonds and notes payable	2,104,701	1,893,195
Accounts payable, other accrued expenses and other liabilities	4,095,084	2,979,130
Contract advance payments	2,048,254	490,655
Accrued salaries and benefits	5,400,758	4,997,148
Current maturities of operating lease liabilities	1,665,625	
Total current liabilities	15,314,422	10,360,128
NONCURRENT LIABILITIES		
Bonds payable, net of current portion and debt issuance costs	12,740,611	13,934,838
Notes payable, net of current portion	1,637,852	1,570,186
Operating lease liabilities, less current maturities	2,325,723	
Other	38,527	274,353
Total noncurrent liabilities	16,742,713	15,779,377
Total liabilities	32,057,135	26,139,505
NET ASSETS		
Without donor restrictions	71,079,938	75,797,917
With donor restrictions	1,098,586	736,964
Total net assets	72,178,524	76,534,881
Total liabilities and net assets	104,235,659	\$102,674,386

2022 and 2021 revenue includes unrealized gains and losses from the Nexus Family Healing long-term investment portfolio. The portfolio, like the market, experienced volatility in both years.

The operating activities of Nexus-Woodbourne Family Healing are not included in Nexus' Consolidated Financial Statements as the entity has a different fiscal year from Nexus.

REVENUE

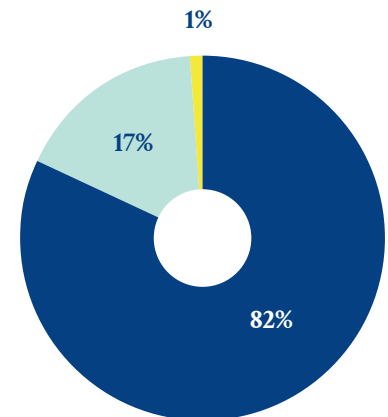


Contract Revenue*	80,347,469
School Revenue	9,086,755
Program Revenue	542,816
Donations, Grants, Events	5,325,608
Investment Revenue (loss)	(4,337,421)
Other	2,794,460

Total..... 93,388,066

* Contract Revenue consists of Federal, State/County, Insurance and Private Party payments

EXPENSES



Program	80,498,442
General and Administrative	16,746,269
Fundraising	1,065,182

Total..... 98,309,893



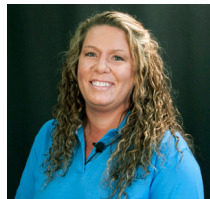
Hormel guests at 2022 Night for Nexus

“Now more than ever, Nexus Family Healing is essential to those we serve. Donors make a difference in the lives of the youth and families we serve. We couldn’t do this life changing work without you. We are forever grateful.”

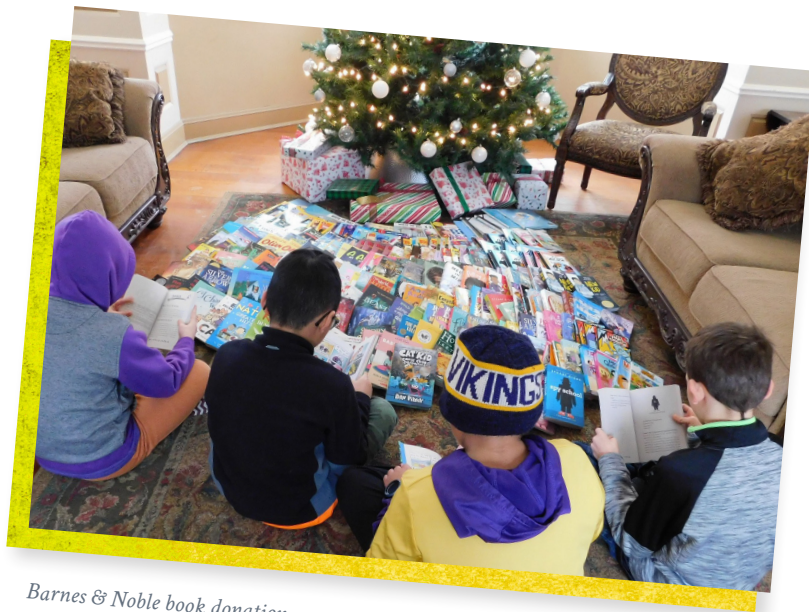


– Joelene Evenson
Sr. Director of Nexus Foundation

“We are so grateful for the donation to fund birthday parties for our kids. This isn’t just about a gift, but about making these kids feel worthy and special and deserving.”



– Denise Dallas
Group Home Supervisor
Nexus-Mille Lacs Family Healing



Barnes & Noble book donation



Thielen Foundation supported recreational projects at Nexus-Gerard

“Dan’s recovery at Nexus changed our whole family dynamic. Dan is doing amazingly well. We are so grateful to Nexus, the staff at Nexus-Gerard and to all those who donate and volunteer. Simply put, they are amazing and changed my son’s life.”



– Eric Mercer
Dan's Father and Nexus Family Healing Board of Directors



Nexus Family Healing Executive Leadership

Dr. Michelle K. Murray
President/CEO

Bobbi Kochevar
Chief Operating Officer

Scott McGuire
Chief Financial Officer

Jennifer McIntosh
Chief Human Resources Officer

Paula Minske
Vice President of Clinical Services

Margaret Vimont
Vice President of Strategy and Service
Development

Nexus Family Healing Board of Directors

Marcia Ballinger
Co-founder and Partner
Ballinger | Leafblad, Inc.

Linda Barnhart
Retired Healthcare/Nurse Executive
HealthEast, Park Nicollet

Lisa Bjerggaard, Vice Chair
Director
North Dakota Division of Juvenile Services

Patrick Devine
Former Superintendent
Waconia Public Schools

Heidi Freisinger
Vice President of Philanthropy
Ecumen

Booker Hodges
Chief of Police
City of Bloomington, MN

Kevin Wayne Johnson
Owner/CEO
The Johnson Leadership Group

Cyndi Leshner
Retired President/CEO
Northern States Power Company - Minnesota

Scott Lynch, Secretary
Senior Executive
Former Senior Vice President, Chief Legal Officer
Blue Cross and Blue Shield of Minnesota

Mette McLoughlin
Vice President of Human Resources
Avivo

Dr. Michelle K. Murray
President/CEO
Nexus Family Healing

Jeri Quest, Chair
Owner
Quest Brand Consulting

Nexus Foundation for Family Healing

Supporting Nexus Family Healing

Perry Bacon
Managing Director
William Blair Private
Wealth Management Group

Joelene Evenson
Sr. Director of Nexus Foundation
Nexus Family Healing

Cyndi Leshner
Retired President/CEO
Northern States Power Company - Minnesota

Eric Mercer, Secretary
Managing Partner
PwC

Dr. Michelle K. Murray
President/CEO
Nexus Family Healing

Jeanne Sheehan, Board Chair
Community Member

Connect with Us!     YouTube

Sign up for news and happenings at
nexusfamilyhealing.org/subscribe >>



Visit our website at
NexusFamilyHealing.org



No child or family is ever beyond hope.

Whatever your needs, Nexus Family Healing is here to help. Learn more at NexusFamilyHealing.org or contact any of our locations directly. Let's start the journey of healing. Together.

ILLINOIS

Nexus-Indian Oaks Family Healing

101 North Bramble Street
Manteno, IL 60950
815-802-3700

Nexus-Onarga Family Healing

110 North Locust Street
Onarga, IL 60955
815-268-4001

MARYLAND

Nexus-Woodbourne Family Healing

1301 Woodbourne Avenue
Baltimore, MD 21239
410-433-1000

MINNESOTA

Nexus-FACTS Family Healing

1385 Mendota Heights Rd., Suite 200
Mendota Heights, MN 55120
651-379-9800

Nexus-Gerard Family Healing

1111 28th Street NE
Austin, MN 55912
507-433-1843

Nexus-Kindred Family Healing

505 Hwy 169 North, Suite 500
Plymouth, MN 55441
(763) 551-8640

Nexus-Mille Lacs Family Healing

407 130th Avenue South
Onamia, MN 56359
320-532-4005

Aspen House

2031 Victoria Rd. South
Mendota Heights, MN 55118
651-447-4090

Operated by Nexus Family Healing

Southeast Regional Crisis Center

2121 Campus Drive SE
Rochester, MN 55904
507-322-3019

Operated by Nexus Family Healing

NORTH DAKOTA

Nexus-PATH Family Healing

1202 Westrac Drive, Suite 400
Fargo, ND 58103
701-280-9545



NEXUS FAMILY HEALING | 505 HWY 169 NORTH, SUITE 500, PLYMOUTH, MINNESOTA 55441 | 763.551.8640 | NEXUSFAMILYHEALING.ORG

Nexus Family Healing is a nonprofit, 501(c)(3) organization and is a tax-exempt public charity under section 501(c)(3) of the Internal Revenue Code, EIN #41-1419064.